



# Safety cabin

- » Protects human life against hazards at refineries and other sensitive areas
- » Complete cabin protected against blast, gas, fire and smoke





**Safety cabin is a variation of the SÄLZER modular guard house<sup>1)</sup>, specially designed for the use at refineries, chemical plants, ammunition factories and many other sensitive areas. It is individually designed to offer protection for workers after a petro-chemical accident until the rescue teams arrive.**

- The complete safety cabin is blast resistant, completely assembled and ready to use.
- Can be built anywhere on site.
- The standard size is 2,554 x 6,188 x 3,000 mm. In this standard size up to 10 people will find protection. Smaller or larger sizes are possible.
- The levels of security against forced entry, bullets and explosion are freely selectable.
- Available as a fixed or mobile unit.
- All necessary kinds of connection for power, water, phone etc will be prepared by SÄLZER. So the cabin can be individual equipped with e.g. survival ventilation equipment, gas filter and explosion protection valves to protect the people inside against gases, blast and smoke.

1) The modular guard house from SÄLZER can be designed for various application, whether as access control for embassies, military facilities, data center etc. The number of modules is variable. The guard house is complete installed at the SÄLZER factory and can be inspected by the customer before delivery. Installed and ready to use within 1 to 7 days after foundation preparation. Further information: [www.saelzer-security.com/products](http://www.saelzer-security.com/products)



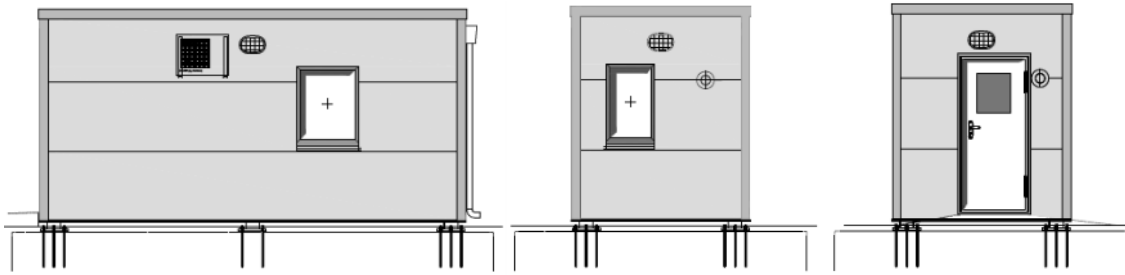
Certified according to:  
DIN EN ISO 9001:2008.



Certified according ECO-SYS (Occupational safety to BS OHSAS 18001 / Environmental protection to ISO 14001).



# Construction



Standard design of the safety cabin.

The security cabin, designed as self-supporting frame construction is completely produced by SÄLZER. The complete cabin incl. roof, floor, walls, door and windows is blast resistant up to 700 mbar / 20 msec (higher security requirements are possible).

Brief description	
<b>Basic construction</b>	self-supporting frame construction, steel sections standard size: 2,554 x 6,188 x 3,000 mm
<b>Blast resistance</b>	external walls, roof, windows and door 700 mbar / 20 msec.
<b>Foundation</b>	reinforced concrete (done by others)
<b>Roof construction</b>	disconnected ceiling tiles from coated chipboard (suspended ceiling), reinforcements according to the security level, thermally insulated, Alwitra EVALON waterproofing membranes
<b>Wall construction</b>	plasterboard painted, steel frames, reinforcements according to security level, Hoesch thermal insulation panel RAL 7035
<b>Floor construction</b>	steel substructure in accordance to the static calculation, thermally insulated, 25 mm fermacell fibreboard, dry flooring, PVC floor covering Armstrong rock dust mid NCS S4005-Y50R
<b>Windows</b>	3 fixed aluminium windows window sizes: 1,500 x 1,100 mm and 1,000 x 1,100 mm thermal insulation: approx. 1.6 W/m <sup>2</sup> K painted RAL 7035
<b>Door</b>	glazed steel door size: 1,010 x 2,100 mm, glass vision 500 x 700 mm with security locking mechanism, top mounted door closer and security handle set made of stainless steel. thermal insulation: approx. 2.2 W/m <sup>2</sup> K painted RAL 7035
<b>Option</b>	protection against forced entry, ballistic attacks, fire and smoke
<b>Remarks</b>	standard design above, other sizes, security levels and designs, paintings are possible.



Glazed steel door with top mounted door closer.



In the standard design 3 aluminium windows are installed.



Perimeter security.



Guard houses & security entrances.



Doors & gates in steel and aluminium.



Windows & facades.

# SYSTEM SÄLZER®

Over 40 years SÄLZER has led the industry in the development and technology of explosion, bullet, forced entry, fire and smoke resistant building components. If electronic or mechanic security products - the complete product range around the building security is integrated in SYSTEM SÄLZER®: started with the protection of access roads e. g. by drop arm barriers, guard houses, doors, windows, facades up to access control.

SÄLZER products are subjected to stringent internal and external tests. The products are available in all security levels and comply with the highest quality criteria specified in worldwide standards like DIN EN, BS and UL.

Spectacular test videos:  
[youtube.com/user/saelzersecurity](https://www.youtube.com/user/saelzersecurity)



Latest information:  
[facebook.com/saelzer.marburg](https://www.facebook.com/saelzer.marburg)

